



Watchfield Court, London, W4 4NB

HEATING & HOT WATER INCLUDED. An immaculately presented one-bedroom flat ideally located in this sought-after mansion block close to all amenities and with the added benefit of a double balcony and off-street parking. Comprising a double bedroom, luxury bathroom, reception room with French windows onto a west-facing balcony, fully integrated kitchen, automatic lift, communal landscaped gardens and the added benefit of off-street parking and a porter. Ideally located just south of Chiswick High Road with its extensive transport links and shopping facilities. Hounslow Council Tax Band D. EPC-C. Unfurnished. Available 18th December.

£2,000 Per Calendar Month

- Newly refurbished apartment
- Heating & Hot Water Included
- West-facing double balcony
- Communal gardens and off street parking
- Automatic lift and porter
- Sought-after mansion block
- Unfurnished
- Available 18th December

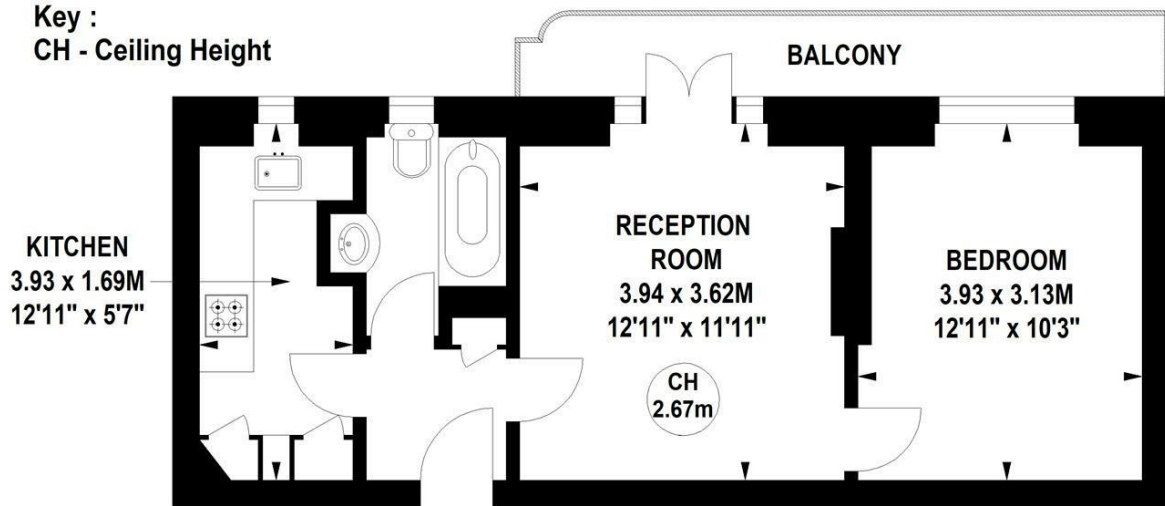
Watchfield Court, W4

Approximate gross internal area

39.76 sq m / 428 sq ft



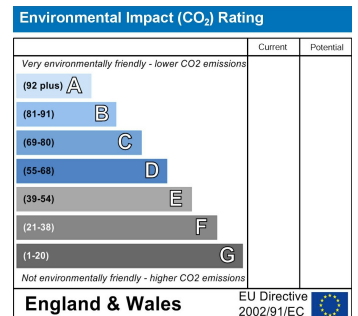
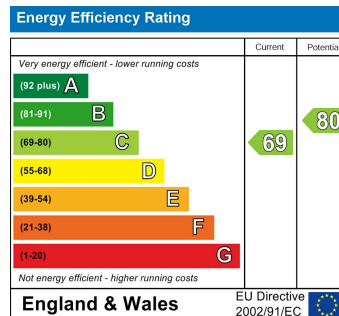
Key :
CH - Ceiling Height



Third Floor

Not to scale, for guidance only and must not be relied upon as a statement of fact.
All measurements and areas are approximate only

Tenure - Leasehold
Lease length - 137 Years remaining
Ground Rent - peppercorn
Service Charge - TBC
Local authority - Hounslow
Council tax - Band E



5-7 Turnham Green Terrace, Chiswick, London, W4 1RG

Tel 020 8747 8800

E-mail lettings@whitmanandco.com

Website www.whitmanandco.com

PrimeLocation.com

Zoopla.co.uk

[rightmove](http://rightmove.com)

OnTheMarket.com